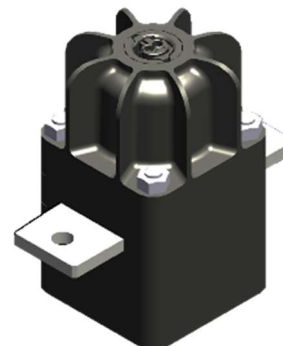


# Pyro Switch Device PYSD-10-1

## Pyro Switch for high voltage/current applications

- Fast separation time
- Low internal resistance
- Irreversible device
- Non-flammable device



## General Specifications

### Breaking Capacity

500V / 19.5kA/18μH

1000V / 14kA/18μH

1500V / 15kA/10μH

### Current carrying capacity\*

500A@25degC

400A@50degC

250A@85degC

\*Tested with 100mm<sup>2</sup> terminal. This capacity depends on the cooling system, terminal size and contact surface etc. The other data on request.

Separation time <1msec@2.5A trigger  
Trigger to Zero A

Weight <250g

## Busbar

Busbar resistance <40μΩ before function  
>50MΩ after function

Busbar cross section 26mm x 3mm

Busbar material: Copper

plating on request

Terminal type M6 screw or welding

## Temperature

Operating temp. -40degC to 105degC

Storage temp. -40degC to 80degC

## Qualification

in accordance with AK-LV124

## Triggering device (Initiator) Specification

Qualified acc. to AK-LV 16 & USCAR

Initiator resistance 2.1±0.4Ω

Triggering pulse current ≥ 1,75 A / 0,5 ms

Or ≥ 1,20 A / 2,0 ms

No-triggering pulse current ≤ 0,4 A

Or ≤ 5,0 A / ≤ 4 μs

Diagnostic current 100 mA

Self-ignition >300degC

Connector type VDA-AK 1 or AK 2  
according to ISO 19072

This is a provisional specification and may be subject to change without any notification. The contents of this data sheet are the test results under specific conditions. Further detail data information is on request.

## Pacific Engineering Corporation

450, Hinoki-cho, Ogaki, Gifu, 503-0981, Japan  
+81 584 91 3131

