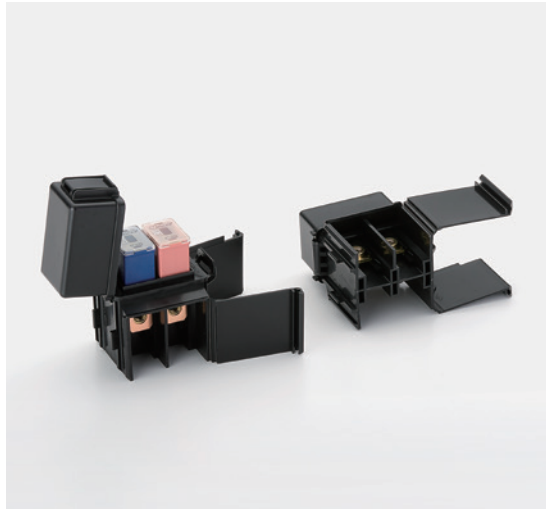


# SBF Fuse Holders

## Fuse Holder (Block No.17)



RoHS

ELV

Exclusive for SBFC-BT (2pcs)

### Product information

Part Number 3536-0000

## Fuse Holder (Block No.33)



RoHS

ELV

Exclusive for SBFC-AS (3pcs)

### Product information

Part Number 3562-0000

# Short Pins



## BFMN-SP



RoHS

ELV

For interrupting dark current  
(Exclusive for BFMN)

### Product information

Part Number 1240-0000

## BFLP-SP



RoHS

ELV

For interrupting dark current  
(Exclusive for BFLP)

### Product information

Part Number 1151-0000