

Slow Blow Fuse

International
Standard Part

RoHS

ELV



SBFW-L M6

M6 bolt type



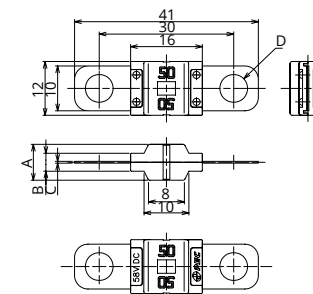
General Specification

Rated Voltage	DC58V
Breaking Capacity	1000A
Recommended Operating Temp.	-40°C~120°C*2
Standard	ISO8820-5*3
Country of Origin	Japan
Plating	Sn Plating
Standard Packaging	2,000
Insertion Force	—
Pull-out Load	—
Recommended Torque	(6.0±1.0)N·m

*2 Please contact us for the details of operating temperature.

*3 Except for the breaking capacity

Dimensions



CURRENT RATING		DIMENSION			
		A	B	C	D
30A~80A	M6 TYPE	8	4	0.4	6.2
100A~200A	M6 TYPE	8.24	4.24	0.64	6.2

Product Lineup

Ampere Rating(A)	Part Number	Housing Colors	Resistance Value	Voltage Drop*1
30	3338	Orange	2.11 mΩ	86 mV
40	3348	Green	1.40 mΩ	77 mV
50	3358	Red	1.18 mΩ	73 mV
60	3368	Yellow	0.89 mΩ	71 mV
70	3378	Brown	0.72 mΩ	66 mV
80	3388	White	0.47 mΩ	51 mV
100	3319	Blue	0.41 mΩ	58 mV
125	3329	Pink	0.35 mΩ	59 mV
150	3108	Gray	0.36 mΩ	50 mV
175	3118	Tan	0.31 mΩ	51 mV
200	3128	Violet	0.29 mΩ	52 mV

*1 Voltage drop: apply 100% of the rated current (150A-200A: at 75% of the rated current).

Time-Current Characteristic [30A~125A]

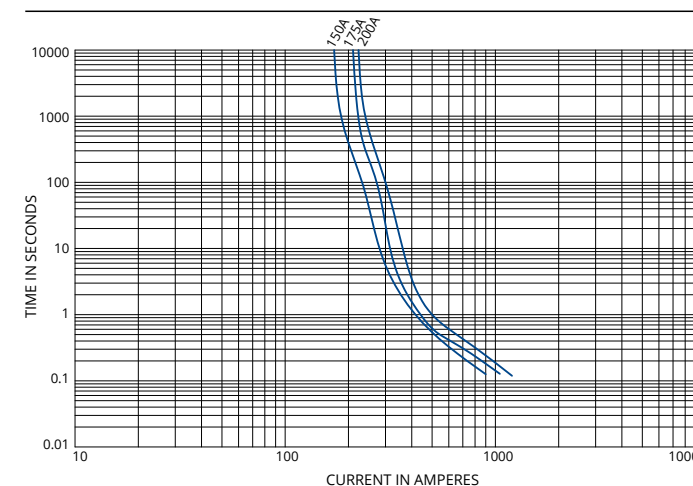
% of Ampere Rating(A)	Operating Time	
	Min	Max
100%	100hrs.	—
110%	4hrs.	—
150%	90sec.	3600sec.
200%	3sec.	100sec.
300%	0.3sec.	3sec.
500%	0.1sec.	1sec.

Time-Current Characteristic [150A~200A]

% of Ampere Rating(A)	Operating Time	
	Min	Max
75%	100hrs.	—
200%	1sec.	15sec.
350%	0.3sec.	5sec.
600%	0.1sec.	1sec.

*The fuse characteristic may change depending on the conditions of use.

Time-Current Characteristic Chart



*Please refer to the blowing characteristic graph of the 30A to 125A fuses on page 32.