

SBFC-LPJ

The SBFC-LPJ is a more compact and more lightweight SBFC-JT

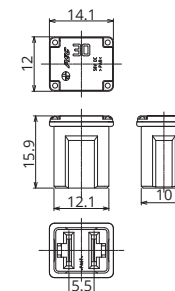


General Specification

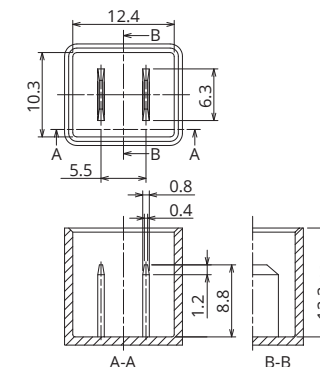
Rated Voltage	DC58V
Breaking Capacity	1000A
Recommended Operating Temp.	-40°C~120°C*2
Standard	ISO8820-4
Country of Origin	Japan/Mexico
Plating	—
Standard Packaging	2,000
Insertion Force	44.1N
Pull-out Load	9.8N~24.5N
Recommended Torque	—

*2 Please contact us for the details of operating temperature.

Dimensions



Cavity



Product Lineup

Ampere Rating(A)	Part Number	Housing Colors	Resistance Value	Voltage Drop*1
20	3422	Light Blue	4.3 mΩ	103 mV
25	3472	White	3.5 mΩ	106 mV
30	3432	Pink	3.0 mΩ	103 mV
40	3442	Green	1.9 mΩ	92 mV
50	3452	Red	1.5 mΩ	92 mV
60	3462	Yellow	1.2 mΩ	93 mV

*1 Voltage drop: apply 100% of the rated current.

Time-Current Characteristic

% of Ampere Rating(A)	Operating Time	
	Min	Max
110%	100hrs.	—
135%	60sec.	1800sec.
200%	5sec.	60sec.
350%	0.2sec.	7sec.
600%	0.04sec.	1sec.

*The fuse characteristic may change depending on the conditions of use.

Time-Current Characteristic Chart

