

# SBFC-ET

## High-amperage plug-in type fuse

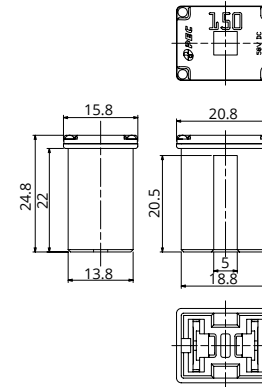


### General Specification

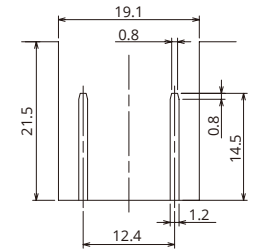
|                             |               |
|-----------------------------|---------------|
| Rated Voltage               | DC58V         |
| Breaking Capacity           | 1000A         |
| Recommended Operating Temp. | -40°C~120°C*2 |
| Standard                    | —             |
| Country of Origin           | Japan         |
| Plating                     | Tin plating   |
| Standard Packaging          | 500           |
| Insertion Force             | 44.1N         |
| Pull-out Load               | 9.8N~24.5N    |
| Recommended Torque          | —             |

\*2 Please contact us for the details of operating temperature.

### Dimensions



### Cavity



### Product Lineup

| Ampere Rating(A) | Part Number | Housing Colors | Resistance Value | Voltage Drop*1 |
|------------------|-------------|----------------|------------------|----------------|
| 50               | 3340        | Red            | 1.23 mΩ          | 84.4 mV        |
| 60               | 3350        | Yellow         | 0.99 mΩ          | 91.2 mV        |
| 70               | 3360        | Brown          | 0.95 mΩ          | 84.2 mV        |
| 80               | 3370        | Black          | 0.88 mΩ          | 84.2 mV        |
| 100              | 3380        | Blue           | 0.72 mΩ          | 86.5 mV        |
| 125              | 3390        | Pink           | 0.56 mΩ          | 97.9 mV        |
| 150              | 3400        | Gray           | 0.52 mΩ          | 107.1 mV       |

\*1 Voltage drop: apply 100% of the rated current.

### Time-Current Characteristic

| % of Ampere Rating(A) | Operating Time |          |
|-----------------------|----------------|----------|
|                       | Min            | Max      |
| 110%                  | 4hrs.          | —        |
| 150%                  | 30sec.         | 3600sec. |
| 200%                  | 5sec.          | 100sec.  |
| 350%                  | 0.2sec.        | 7sec.    |
| 600%                  | 0.04sec.       | 1sec.    |

\*The fuse characteristic may change depending on the conditions of use.

### Time-Current Characteristic Chart

