

Multi Slow Blow Fuse

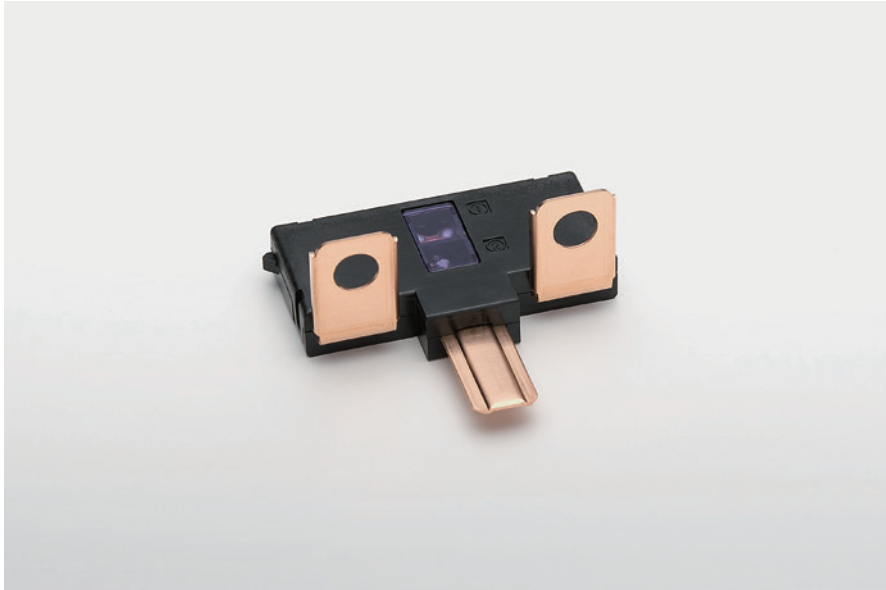
RoHS

ELV



# MUSB-A

For 2 circuits

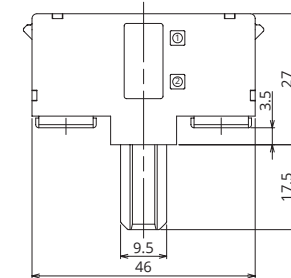


## General Specification

Rated Voltage	DC32V
Breaking Capacity	1000A
Recommended Operating Temp.	-40°C~100°C*2
Standard	—
Country of Origin	Japan
Plating	—
Standard Packaging	300

\*2 Please contact us for the details of operating temperature.

## Dimensions



## Product Lineup

	Part Number	FUSE 1	FUSE 2
1	3580	100A	70A
2	3581	120A	70A
3	3582	100A	40A
4	3583	120A	40A
5	3584	100A	60A
6	3585	80A	50A
7	3589	80A	70A
8	3579	100A	30A
9	3621	60A	50A
10	3622	120A	60A