

# EVFG( $\phi 6.4$ )

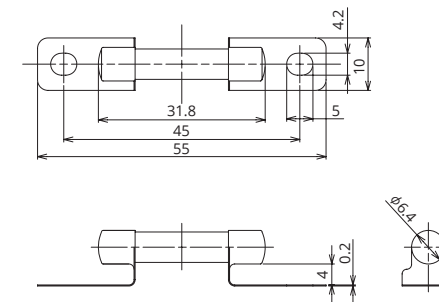
Fuses to protect auxiliary system circuits such as electric compressors and DC/DC converters



## General Specification

Rated Voltage	DC450V
Breaking Capacity	800A 2000A(2746)
Operation Temperature	-40°C~100°C
Standard	—
Country of Origin	Japan
Plating	Ni Plating
Standard Packaging	100
Insertion Force	—
Extraction Force	—
Recommended Torque	2.1N±0.2

## Dimensions



## Product Lineup

Ampere Rating(A)	Part Number	Bolt Size	Diameter	Resistance Value	Voltage Drop*1
1	2751	M4	φ6.4	230.0 mΩ	—
5	2752			46.0 mΩ	—
10	2746			16.7 mΩ	84 mV

\*1 Voltage drop: apply 50% of the rated current.

\*In case a product other than the ones published in this document is desired, please contact us for details.

## Time-Current Characteristic [2751,2752]

% of Ampere Rating(A)	Operating Time	
	Min	Max
110%	100hrs.	—
350%	—	0.5sec.
600%	—	0.2sec.

## Time-Current Characteristic [2746]

% of Ampere Rating(A)	Operating Time	
	Min	Max
110%	4hrs.	—
200%	5sec.	100sec.
300%	0.5sec.	15sec.
500%	—	1sec.

\*The fuse characteristic may change depending on the conditions of use.

## Time-Current Characteristic Chart

