

# EVFC( $\phi 30$ )

High Voltage automotive fuses with excellent durability properties

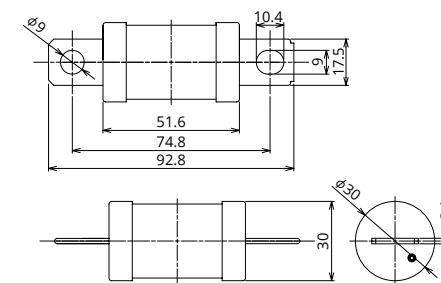


## General Specification

Rated Voltage	DC450V
Breaking Capacity	6000A
Recommended Operating Temp.	-40°C~125°C*2
Standard	—
Country of Origin	Japan
Plating	Ni Plating
Standard Packaging	80
Insertion Force	—
Pull-out Load	—
Recommended Torque	(12.0±1.0)N·m

\*2 Please contact us for the details of operating temperature.

## Dimensions



## Product Lineup

Ampere Rating(A)	Part Number	Bolt Size	Diameter	Resistance Value	Voltage Drop*1
150	2870	M8	φ30	0.67 mΩ	160 mV
175	2871			0.56 mΩ	170 mV
200	2872			0.47 mΩ	170 mV
225	2873			0.40 mΩ	170 mV
250	2874			0.35 mΩ	180 mV

\*1 Voltage drop: apply 100% of the rated current.

\*In case a product other than the ones published in this document is desired, please contact us for details.

## Time-Current Characteristic

% of Ampere Rating(A)	Operating Time	
	Min	Max
110%	4hrs.	—
200%	1sec.	300sec.
300%	0.2sec.	30sec.
500%	0.05sec.	1sec.

\*The fuse characteristic may change depending on the conditions of use.

## Time-Current Characteristic Chart

