

EVFC($\phi 20$)

High Voltage automotive fuses with excellent durability properties

EVF

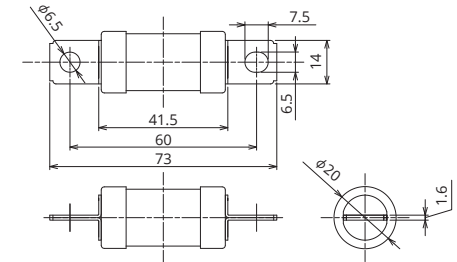


General Specification

Rated Voltage	DC500V
Breaking Capacity	20000A
Recommended Operating Temp.	-40°C~125°C*2
Standard	—
Country of Origin	Japan
Plating	Tin plating
Standard Packaging	140
Insertion Force	—
Pull-out Load	—
Recommended Torque	(9.0±1.0)N·m

*2 Please contact us for the details of operating temperature.

Dimensions



Product Lineup

Ampere Rating(A)	Part Number	Bolt Size	Diameter	Resistance Value	Voltage Drop*1
60	2801	M6	φ20	1.4 mΩ	48 mV
70	2802			1.2 mΩ	49 mV
80	2803			1.1 mΩ	49 mV
100	2804			0.9 mΩ	51 mV
125	2805			0.7 mΩ	51 mV

*1 Voltage drop: apply 50% of the rated current.

*In case product other than the ones published in this document is desired, please contact us for details.

Time-Current Characteristic

% of Ampere Rating(A)	Operating Time	
	Min	Max
110%	4hrs.	—
135%	150sec.	3600sec.
150%	20sec.	1000sec.
200%	8sec.	150sec.
300%	1sec.	15sec.
500%	0.05sec.	1sec.

*The fuse characteristic may change depending on the conditions of use.

Time-Current Characteristic Chart

