

EVFC($\phi 10.3$)

Fuses to protect auxiliary system circuits such as electric compressors and DC/DC converters

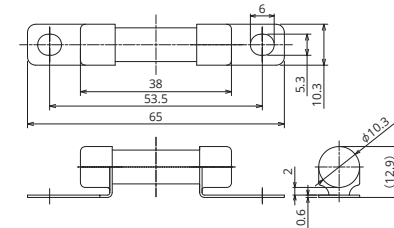


General Specification

Rated Voltage	DC500V
Breaking Capacity	20000A
Recommended Operating Temp.	-40°C~100°C*2
Standard	—
Country of Origin	Japan
Plating	Tin plating
Standard Packaging	240
Insertion Force	—
Pull-out Load	—
Recommended Torque	(4.5±1.0)N·m

*2 Please contact us for the details of operating temperature.

Dimensions



Product Lineup

Ampere Rating(A)	Part Number	Bolt Size	Diameter	Resistance Value	Voltage Drop*1
15	2789	M5	$\phi 10.3$	14.3 m Ω	107 mV
20	2790			10.6 m Ω	112 mV
30	2791			3.4 m Ω	55 mV
40	2792			2.2 m Ω	50 mV
50	2683			1.7 m Ω	47 mV

*1 Voltage drop: apply 50% of the rated current.

*In case a product other than the ones published in the document is desired, please contact us.

Time-Current Characteristic

% of Ampere Rating(A)	Operating Time	
	Min	Max
110%	4hrs.	—
135%	300sec.	3600sec.
200%	5sec.	100sec.
300%	0.5sec.	15sec.
500%	—	1sec.

*The fuse characteristic may change depending on the conditions of use.

Time-Current Characteristic Chart

