

# BFSL

This state-of-the-art blade fuse was realized by reducing the width of the BFMN to offer space reduction

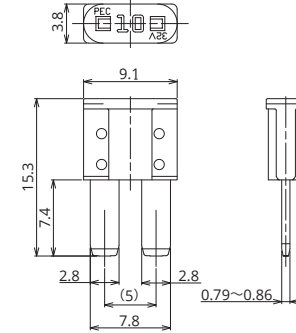


### General Specification

Rated Voltage	DC32V
Breaking Capacity	1000A
Recommended Operating Temp.	-40°C~120°C*2
Standard	ISO8820-12
Country of Origin	Japan
Plating	Ag Plating
Standard Packaging	18,000
Insertion Force	—
Pull-out Load	—
Recommended Torque	—

\*2 Please contact us for the details of operating temperature.

### Dimensions



### Product Lineup

Ampere Rating(A)	Part Number	Housing Colors	Resistance Value	Voltage Drop*1
3	1168	Violet	32.3 mΩ	131 mV
4	1169	Pink	23.1 mΩ	121 mV
5	1173	Tan	17.7 mΩ	122 mV
7.5	1174	Brown	11.0 mΩ	109 mV
10	1175	Red	7.9 mΩ	111 mV
15	1176	Blue	5.1 mΩ	110 mV
20	1177	Yellow	3.6 mΩ	103 mV
25	1178	Natural	2.8 mΩ	97 mV
30	1179	Green	2.2 mΩ	96 mV

※1 Voltage drop: apply 100% of the rated current.

### Time-Current Characteristic

% of Ampere Rating(A)	Operating Time	
	Min	Max
110%	100hrs.	—
135%	0.75sec.	120sec.
160%	0.25sec.	50sec.
200%	0.15sec.	5sec.
350%	0.04sec.	0.5sec.
600%	0.02sec.	0.1sec.

\*The fuse characteristic may change depending on the conditions of use.

### Time-Current Characteristic Chart

