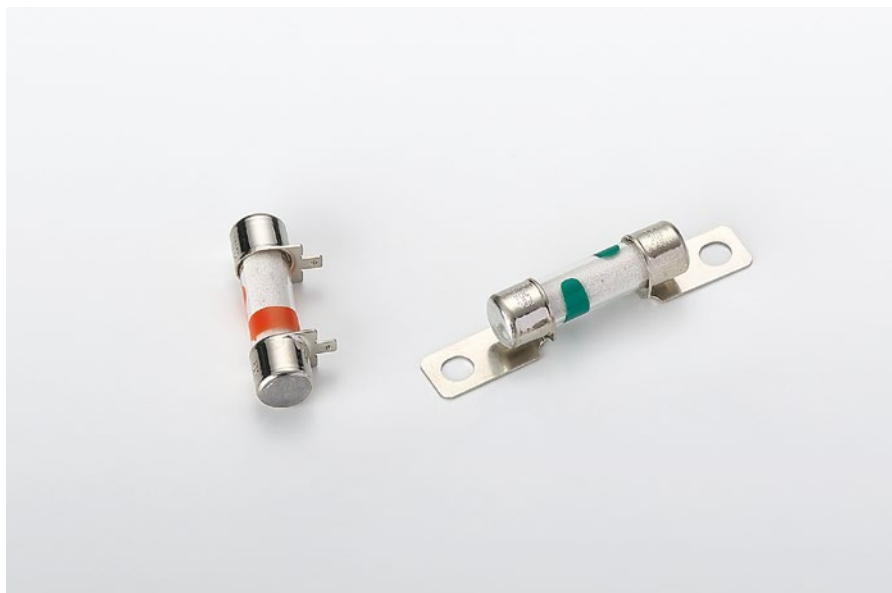


# EVFG( $\phi 10.3$ )

Fuses to protect auxiliary system circuits such as electric compressors and DC/DC converters

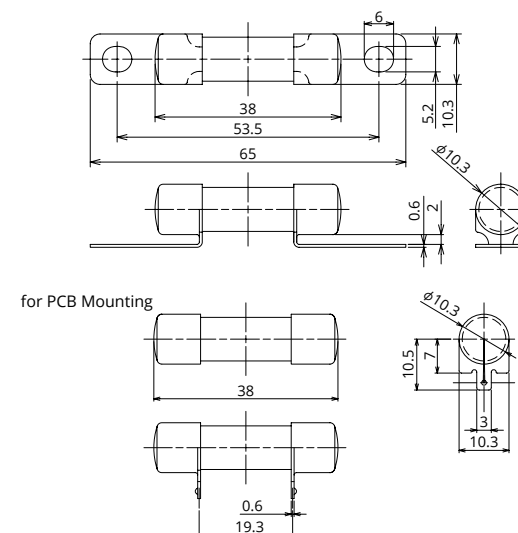


## General Specification

Rated Voltage	DC450V
Breaking Capacity	2000A
Recommended Operating Temp.	-40°C~100°C*2
Standard	—
Country of Origin	Japan/Thailand
Plating	Ni Plating
Standard Packaging	200
Insertion Force	—
Pull-out Load	—
Recommended Torque	(4.5±1.0)N·m

\*2 Please contact us for the details of operating temperature.

## Dimensions



## Product Lineup

Ampere Rating(A)	Part Number	Bolt Size	Diameter	Resistance Value	Voltage Drop*1
15	2744	M5	$\phi 10.3$	7.4 m $\Omega$	63 mV
20	2743			4.2 m $\Omega$	47 mV
30	2742			2.8 m $\Omega$	47 mV
40	2748			2.1 m $\Omega$	48 mV
50	2749			1.6 m $\Omega$	48 mV
40	2645	for PCB Mounting		—	—

\*1 Voltage drop: apply 50% of the rated current.

\*In case a product other than the ones published in the document is desired, please contact us.

\*PCB-mount type is under development, so please contact us for the details.

## Time-Current Characteristic

% of Ampere Rating(A)	Operating Time	
	Min	Max
110%	4hrs.	—
135%	300sec.	3600sec.
200%	5sec.	100sec.
300%	0.5sec.	15sec.
500%	—	1sec.

\*The fuse characteristic may change depending on the conditions of use.

## Time-Current Characteristic Chart

