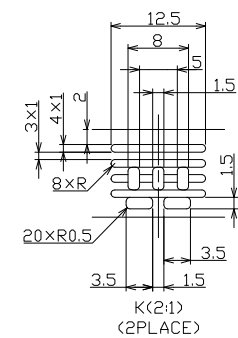
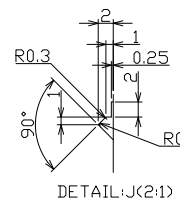
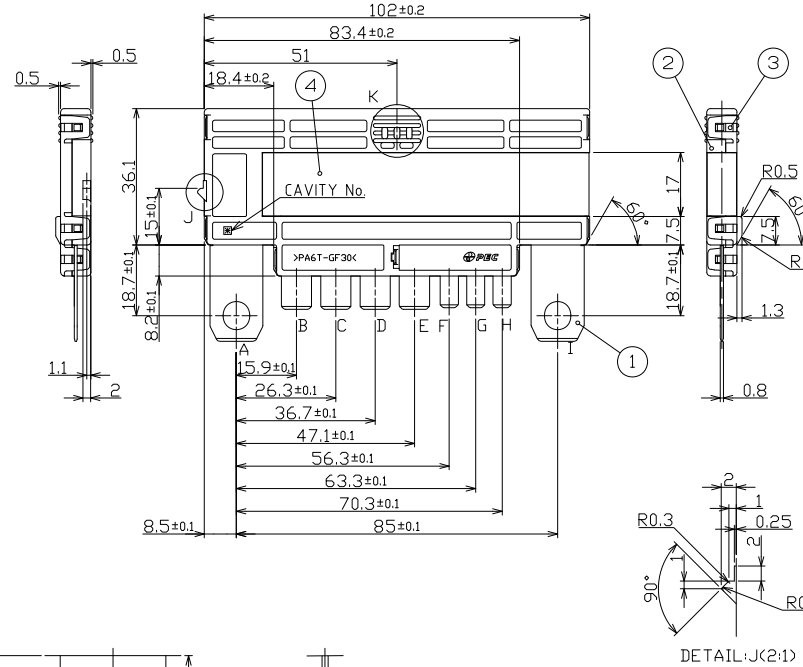
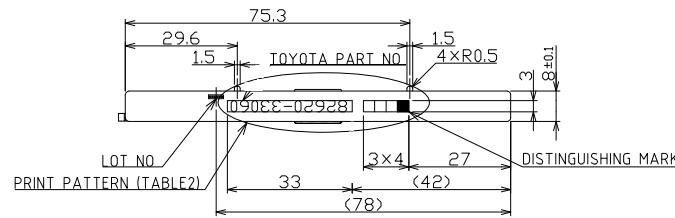


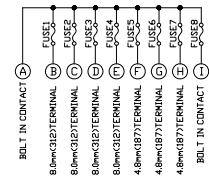
NO.	DATE	REVISION RECORDS	REVISED	REVISION NO.
△	03/FEB/14	ADDING PART NUMBER ON THE TABLE	KAWASE	-
△	02/SEP/15	ADDING PART NUMBER ON THE TABLE AND PRINT PATTERN	IWAKURA	-
△	18/SEP/15	DELETING PART NO. 3763(MUSB-M2-8) ADDING NOTE2.	IWAKURA	-

<TABLE1 FUSE RATING AND DISTINGUISHING>

PEC PART NAME	MUSB-M2-1	MUSB-M2-2	MUSB-M2-3	MUSB-M2-4	MUSB-M2-5	MUSB-M2-6	MUSB-M2-7	△△
PEC PART NO.	36240001	36250001	37310001	37320001	37330011	37340001	37350001	
FUSE1	80A	80A	80A	80A	50A	80A	80A	
FUSE2	50A	50A	50A	50A	50A	50A	50A	
FUSE3	50A	50A	50A	50A	50A	40A	50A	
FUSE4	50A	50A	40A	40A	40A	30A	50A	
FUSE5	30A	30A	40A	40A	30A	30A	40A	
FUSE6	30A	30A	30A	30A	30A	30A	30A	
FUSE7	30A	30A	30A	30A	40A	40A	30A	
FUSE8	120A	140A	140A	150A	100A	140A	150A	
HOUSING COLOR CODE	BLACK	BLUE	DRANGE	LIHGT BLUE	GREEN	BROWN	RED	

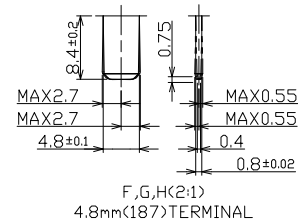
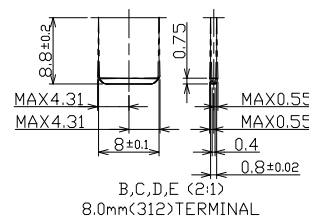
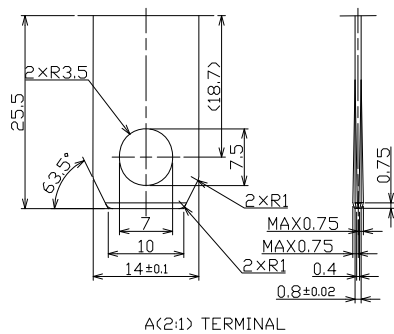


<CIRCUIT DIAGRAM>



NOTE.  
1. THE DRAWING OF TOP VIEW SHOWS MUSB-M2-1, THE OTHER SHALL BE CONFORMED WITH THE TABLE.  
△ 2. COMPLY WITH ENVIRONMENTAL RESTRICTION AND PROHIBITION WHICH PRESCRIBED UNDER \*PES-02-04\*

注記.  
1. 図中の上面視は、MUSB-M2-1を示しており、その他は表中の内容に従うこと。  
△ 2. 太平洋精工規定(PES-02-04)の環境負荷物質の使用禁止、制限規定を遵守のこと。



4	-	COVER	1	PAR	-	CLEAR	
3	-	HOUSING2	1	PA6T	-	-	
2	-	HOUSING1	1	PA6T	-	-	
1	-	ELEMENT	1	COPPER ALLOY	-	t=0.8	
NO.	PART NO.	PART NAME	Q'TY	MATERIAL	SIZE	REMARKS	
APPROVED	<i>Delate masaka</i>		DIMENSION TOLERANCE	ANGULAR TOLERANCE	FINISH		
CHECKED	<i>ml</i>		±0.3	-	-		
DESIGNED	<i>T. Iwakura</i>		RUST PREVENTION	MATERIAL			
DRAWN	<i>T. Iwakura</i>		-	SEE TABLE			
SCALE	1:1(2:1)	UNIT	mm	DIAGRAM METHOD	PART NAME		
				THIRD ANGLE PROJECTION	MUSB-M2		
DRAWING DATE	18/SEP/15	DRAWING NAME	G3624-0-8	3D CAD DATA	PART NO.		
					SEE TABLE		
<b>Pacific Engineering Corporation</b>						SHEET	SIZE
						1 / 2	A2

# PACKAGING SPECIFICATION

NO.	DATE	REVISION RECORD	SIGN	E.C.N.NO.
		REFER TO (1/2)		

INNER PACKAGING  
 PARTITION CORRUGATED BOARD  
 PARTITION PAD  
 PLASTIC BAG

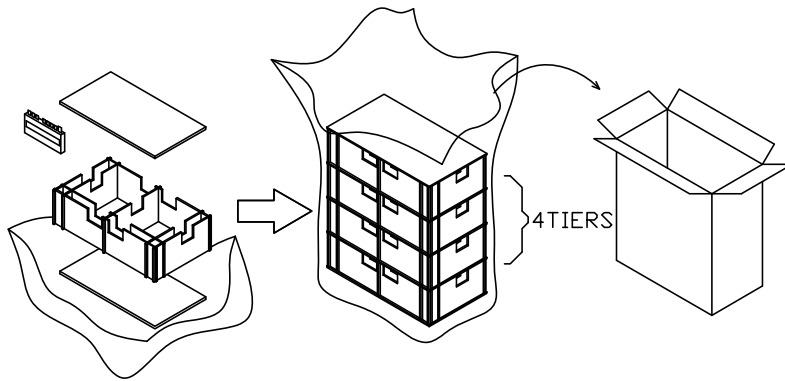
CAPACITY:160 PCS

OUTER PACKAGING  
 CORRUGATED BOARD BOX YP0  
 SIZE (345×210×305)

MARKING  
 ID TAG

**METHOD**

1. PUT THE PARTITION PAD, THE PARTITION CARDBOARD IN THE PLASTIC BAG AND PUT 40 FUSES IN ALL INTO THE FIRST STAGE (LOWERMOST STAGE).
2. LAY THE PARTITION PAD ON THE FIRST STAGE AND PUT ALSO 40 FUSES INTO THE 2ND STAGE IN THE SAME WAY.
3. LAY THE PARTITION PADS ON THE 3RD STAGE AND THE 4TH STAGE (UPPERMOST STAGE) IN THE SAME WAY AND PUT 40 FUSES INTO EACH STAGE.
4. LAY A PARTITION PAD ON THE TOP AND CLOSE THE PLASTIC BAG AFTER PUTTING IT INTO A CARDBOARD BOX. CLOSE THE LID OF THE CARDBOARD BOX WITH PP TAPE.
5. FINALLY, PUT THE ID TAG ON THE SIDE OF THE BOX.



	PART NO.	PART NAME	Q'TY	MATERIAL	SIZE	REMARKS	
APPROVED	<i>Shoichi Morita</i>	DIMENSION TOLERANCE		ANGULAR TOLERANCE	FINISH		
CHECKED	<i>mlr</i>	REFER TO (1/2)		REFER TO (1/2)	REFER TO (1/2)		
DESIGNED	<i>T. Iwakura</i>	RUST PREVENTION		MATERIAL			
DRAWN	<i>T. Iwakura</i>	REFER TO (1/2)		REFER TO (1/2)			
SCALE	UNIT	DIAGRAM METHOD	PART NAME				
-	mm	THIRD ANGLE PROJECTION	MUSB-M2				
DRAWING DATE	DRAWING NAME	3D CAD DATA	PART NO.				
18/SEP/15	G3624-0-8	-	SEE TABLE				
<b>Pacific Engineering Corporation</b>						SHEET	SIZE
						2 / 2	A3