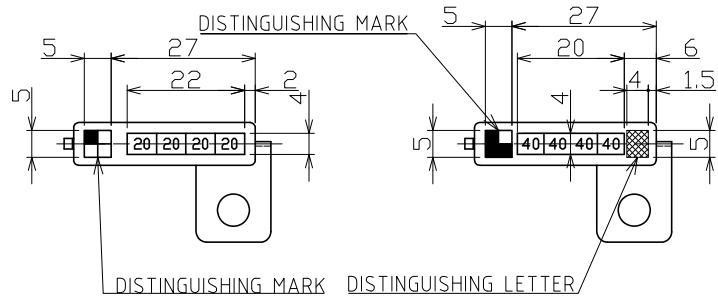


NO.	DATE	REVISION RECORDS	REVISED	REVISION NO.
△	26/DEC/12	PART NAME CHANGE	KAWASE	-
△	08/OCT/13	ADDING PACKAGING SPECIFICATION	KAWASE	-
△	03/FEB/14	ADDING PART NO.3686	KAWASE	-

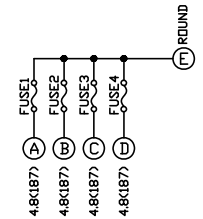


PRINTING PATTERN A PRINTING PATTERN B
PRINT PATTERN

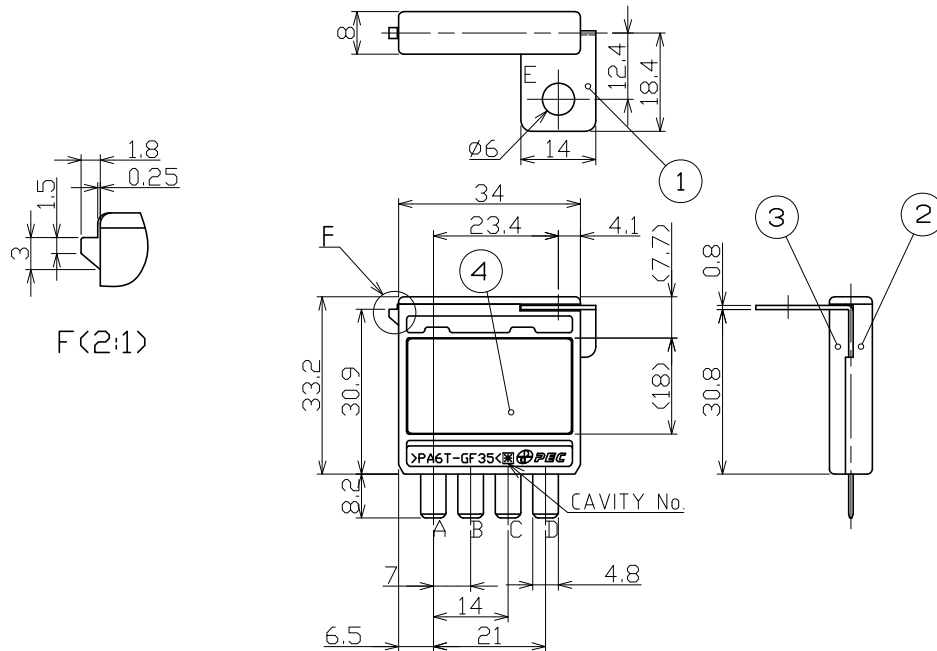
<TABLE1 FUSE RATING AND DISTINGUISHING>

PEC PART NAME	△MUSB-L3-1	△MUSB-L3-2	△MUSB-L3-3	△MUSB-L3-4	△MUSB-L3-5
PEC PART NO.	36820001	36830001	36840001	36850001	36860001
DISTINGUISHING MARK	□	■	▣	■	■
DISTINGUISHING LETTER		J	B	□	H
PRINT PATTERN	PATTERN A	PATTERN B	PATTERN B	PATTERN B	PATTERN B
FUSE1	20A	40A	30A	20A	30A
FUSE2	20A	40A	30A	30A	40A
FUSE3	20A	40A	30A	30A	30A
FUSE4	20A	40A	30A	30A	40A

<CIRCUIT DIAGRAM>



MUSB-L3-1 HAS NO INDICATE DISTINGUISHING LETTER.



NOTE.

1. THE DRAWING OF TOP VIEW SHOWS MUSB-L3-1, THE OTHER SHALL BE CONFORMED WITH THE TABLE.
LOCATION OF THE PRINTING SHALL BE CONFORMED WITH THE PRINTING PATTERN A AND B ON THIS DRAWING

4	-	COVER	2	PAR	-	CLEAR
3	-	HOUSING2	1	PA6T	-	BLACK
2	-	HOUSING1	1	PA6T	-	BLACK
1	-	ELEMENT	1	COPPER ALLOY	-	t0.8
NO.	PART NO.	PART NAME	Q'TY	MATERIAL	SIZE	REMARKS
APPROVED	<i>al Oata</i>		DIMENSION TOLERANCE		ANGULAR TOLERANCE	FINISH
CHECKED	<i>mlr</i>		±0.3		±1°	-
DESIGNED	<i>F, Kawase</i>		RUST PREVENTION		MATERIAL	
DRAWN	<i>K. HARA</i>		-		SEE TABLE	
SCALE		UNIT	DIAGRAM METHOD	PART NAME		
1:1(2:1)		mm	THIRD ANGLE PROJECTION	MUSB-L3		
DRAWING DATE		DRAWING NAME	3D CAD DATA	PART NO.		
03/FEB/14		G3682-0-7	-	SEE TABLE		
Pacific Engineering Corporation					SHEET	SIZE
					1 / 2	A3

PACKAGING SPECIFICATION

NO.	DATE	REVISION RECORD	SIGN	E.C.N.NO.
		REFER TO (1/2)		

INNER PACKAGING
 PARTITION CORRUGATED BOARD
 PARTITION PAD
 PLASTIC BAG

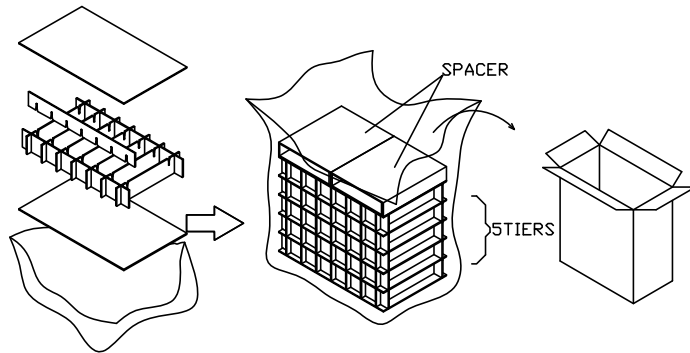
CAPACITY: 480 PCS

OUTER PACKAGING
 CORRUGATED BOARD BOX
 SIZE (348×213×314)

MARKING
 ID TAG

METHOD

1. PUT THE PARTITION PAD, THE PARTITION CARDBOARD IN THE PLASTIC BAG AND PUT 64 FUSES IN ALL INTO THE FIRST STAGE (LOWERMOST STAGE).
2. LAY THE PARTITION PAD ON THE FIRST STAGE AND PUT ALSO 64 FUSES INTO THE 2ND STAGE IN THE SAME WAY.
3. LAY THE PARTITION PADS ON THE 3RD STAGE, THE 4TH STAGE AND THE 5TH STAGE (UPPERMOST STAGE) IN THE SAME WAY AND PUT 64 FUSES INTO EACH STAGE.
4. LAY A PARTITION PAD ON THE TOP AND CLOSE THE PLASTIC BAG AFTER PUTTING IT INTO A CARDBOARD BOX. CLOSE THE LID OF THE CARDBOARD BOX WITH PP TAPE.
5. FINALLY, PUT THE ID TAG ON THE SIDE OF THE BOX.



	PART NO.	PART NAME	Q'TY	MATERIAL	SIZE	REMARKS	
APPROVED	<i>cl. Oata</i>	DIMENSION TOLERANCE	ANGULAR TOLERANCE	FINISH			
CHECKED	<i>mlr</i>	REFER TO (1/2)	REFER TO (1/2)	REFER TO (1/2)			
DESIGNED	<i>F. Kawase</i>	RUST PREVENTION	MATERIAL				
DRAWN	<i>K. HARA</i>	REFER TO (1/2)	REFER TO (1/2)				
SCALE	UNIT	DIAGRAM METHOD	PART NAME				
-	mm	THIRD ANGLE PROJECTION	MUSB-L3				
DRAWING DATE	DRAWING NAME	3D CAD DATA	PART NO.				
03/FEB/14	G3682-0-7	-	SEE TABLE				
Pacific Engineering Corporation						SHEET	SIZE
						2 / 2	A3