

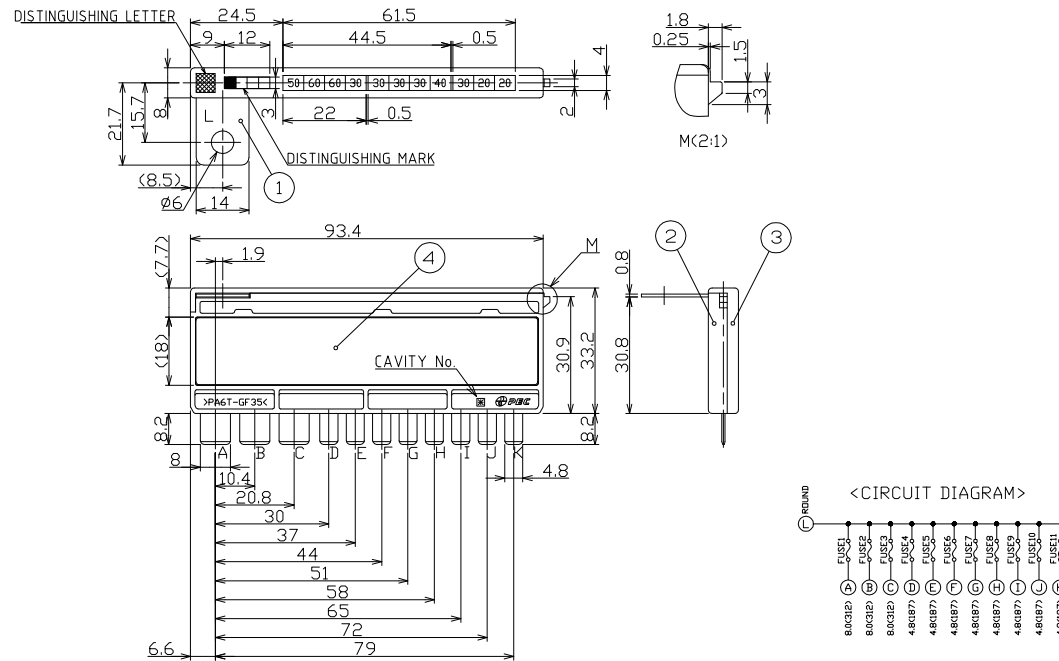
| NO. | DATE | REVISION RECORDS | REVISED | REVISION NO. |
|-----|-----------|---|-----------|--------------|
| △ | 20/DEC/13 | CHANGING FUSE RATING AND HONDA PART NO. | MATSUZAKI | PES-169-207 |
| △ | 07/MAR/14 | ADD PART NO.3794 | HARA | PES-169-224 |
| △ | 23/SEP/14 | ADD PART NO.3795 | KAWASE | PES-169-277 |

<TABLE1 FUSE RATING AND DISTINGUISHING>

| PEC PART NAME | MUSB-L2-1 | MUSB-L2-2 | MUSB-L2-3 | MUSB-L2-4 | MUSB-L2-5 | MUSB-L2-6 |
|-----------------------|-----------|-----------|-----------|-----------|-----------|-----------|
| PEC PART NO. | 36720001 | 36730001 | 36740001 | 36750001 | 36760001 | 36770001 |
| DISTINGUISHING MARK | ■ ■ ■ | ■ ■ ■ | ■ ■ ■ | ■ ■ ■ | ■ ■ ■ | ■ ■ ■ |
| DISTINGUISHING LETTER | | W | H | B | M | J |
| FUSE1 | 50A | 50A | 50A | 50A | 50A | 50A |
| FUSE2 | 60A | 60A | 60A | 60A | 60A | 60A |
| FUSE3 | 60A | 60A | 40A | 40A | 60A | 60A |
| FUSE4 | 30A | 30A | 30A | 30A | 30A | 40A |
| FUSE5 | 30A | 30A | 30A | 30A | 30A | 30A |
| FUSE6 | 30A | 40A | 30A | 30A | 40A | 40A |
| FUSE7 | 30A | 30A | 30A | 30A | 30A | 40A |
| FUSE8 | 40A | 40A | 40A | 40A | 40A | 40A |
| FUSE9 | 30A | 30A | 30A | 30A | 30A | 30A |
| FUSE10 | 20A | 20A | 30A | 20A | 30A | 30A |
| FUSE11 | 20A | 20A | 30A | 20A | 30A | 30A |

| MUSB-L2-7 | MUSB-L2-8 | MUSB-L2-9 | MUSB-L2-10 | MUSB-L2-11 | MUSB-L2-12 | MUSB-L2-13 |
|-----------|-----------|-----------|------------|------------|------------|------------|
| 36780001 | 36790001 | 37910001 | 37920001 | 37930001 | 37940001 | 37950001 |
| ■ ■ ■ | ■ ■ ■ | ■ ■ ■ | ■ ■ ■ | ■ ■ ■ | ■ ■ ■ | ■ ■ ■ |
| L | □ | Y | Z | T | S | R |
| 30A | 30A | 30A | 30A | 30A | 30A | 70A |
| 60A | 60A | 60A | 60A | 30A | 60A | 60A |
| 60A | 60A | 60A | 60A | 20A | 60A | 30A |
| 40A | 30A | 30A | 30A | 20A | 30A | 40A |
| 30A | 30A | 30A | 30A | 30A | 30A | 30A |
| 40A | 40A | 30A | 40A | 40A | 40A | 30A |
| 40A | 20A | 30A | 30A | 30A | 30A | 40A |
| 40A | 40A | 40A | 40A | 30A | 40A | 40A |
| 30A | 30A | 30A | 30A | 40A | 30A | 30A |
| 30A | 30A | 20A | 20A | 30A | 30A | 30A |
| 30A | 40A | 20A | 20A | 20A | 30A | 30A |

MUSB-L2-1 HAS NO INDICATE DISTINGUISHING LETTER.



NOTE.

1.THE DRAWING OF TOP VIEW SHOWS MUSB-L2-1,THE OTHER SHALL BE CONFORMED WITH THE TABLE1.
LOCATION OF THE PRINTING SHALL BE CONFORMED WITH THE PRINTING PATTERN ON THIS DRAWING.

| | | | | | | |
|---|-----|----------|---|--------------|-------|-------|
| 4 | --- | COVER | 2 | PAR | | CLEAR |
| 3 | --- | HOUSING2 | 1 | PA6T | | BLACK |
| 2 | --- | HOUSING1 | 1 | PA6T | | BLACK |
| 1 | --- | ELEMENT | 1 | COPPER ALLOY | t=0.8 | |

| NO. | PART NO. | PART NAME | Q'TY | MATERIAL | SIZE | REMARKS | |
|--|------------|--------------|---------------------|------------------------|--------------------|---------|------|
| APPROVED | T.Nakagawa | | DIMENSION TOLERANCE | | ANGULAR TOLERANCE | FINISH | |
| CHECKED | m.l. | | ±0.3 | | - | - | |
| DESIGNED | F.Kawase | | RUST PREVENTION | | MATERIAL | | |
| DRAWN | F.Kawase | | - | | SEE TABLE | | |
| SCALE | 1:1(2:1) | UNIT | mm | DIAGRAM METHOD | PART NAME | | |
| DRAWING DATE | 23/SEP/14 | DRAWING NAME | G3672-0-14 | THIRD ANGLE PROJECTION | MUSB-L2 | | |
| | | | | | PART NO. SEE TABLE | | |
| Pacific Engineering Corporation | | | | | | SHEET | SIZE |
| | | | | | | 1 / 2 | A2 |

| NO. | DATE | REVISION RECORDS | REVISED | REVISION NO. |
|-----|------|------------------|---------|--------------|
| | | REFER TO (1/2) | | |
| | | | | |
| | | | | |

PACKAGING SPECIFICATION

INNER PACKAGING
 PARTITION CORRUGATED BOARD
 PARTITION PAD
 PLASTIC BAG

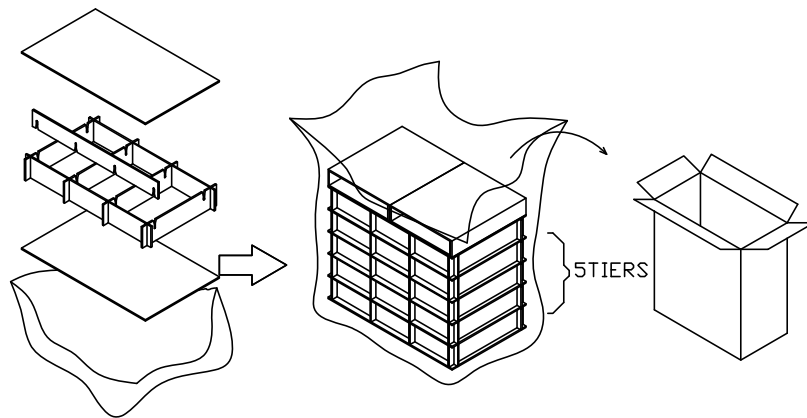
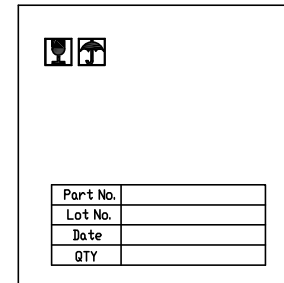
CAPACITY:240 PCS

OUTER PACKAGING
 CORRUGATED BOARD BOX FOR M-SBF-J
 SIZE (345×210×305)

MARKING
 STAMP THE PART NUMBER, LOT NUMBER,
 DATE AND QUANTITY ON THE SIDE OF CORRUGATED BOARD.

METHOD

1. PUT THE PARTITION PAD, THE PARTITION CARDBOARD IN THE PLASTIC BAG AND PUT 48 FUSES IN ALL INTO THE FIRST STAGE (LOWERMOST STAGE).
2. LAY THE PARTITION PAD ON THE FIRST STAGE AND PUT ALSO 48 FUSES INTO THE 2ND STAGE IN THE SAME WAY.
3. LAY THE PARTITION PADS ON THE 3RD STAGE, THE 4TH STAGE AND THE 5TH STAGE (UPPERMOST STAGE) IN THE SAME WAY AND PUT 48 FUSES INTO EACH STAGE.
4. LAY A PARTITION PAD ON THE TOP AND CLOSE THE PLASTIC BAG AFTER PUTTING IT INTO A CARDBOARD BOX. CLOSE THE LID OF THE CARDBOARD BOX WITH PP TAPE.



| NO. | PART NO. | PART NAME | Q'TY | MATERIAL | SIZE | REMARKS | |
|--|--------------------|---------------------|------------------------|-------------------|----------------|---------|------|
| APPROVED | <i>T. Nakagawa</i> | DIMENSION TOLERANCE | | ANGULAR TOLERANCE | FINISH | | |
| CHECKED | <i>m</i> | REFER TO (1/2) | | REFER TO (1/2) | REFER TO (1/2) | | |
| DESIGNED | <i>F. Kawase</i> | RUST PREVENTION | | MATERIAL | | | |
| DRAWN | <i>F. Kawase</i> | REFER TO (1/2) | | REFER TO (1/2) | | | |
| SCALE | | UNIT | DIAGRAM METHOD | PART NAME | | | |
| - | | mm | THIRD ANGLE PROJECTION | MUSB-L2 | | | |
| DRAWING DATE | | DRAWING NAME | 3D CAD DATA | PART NO. | | | |
| 23/SEP/14 | | G3672-0-14 | - | REFER TO (1/2) | | | |
| Pacific Engineering Corporation | | | | | | SHEET | SIZE |
| | | | | | | 2 / 2 | A3 |